

## 65 ft Multi Use Workboat

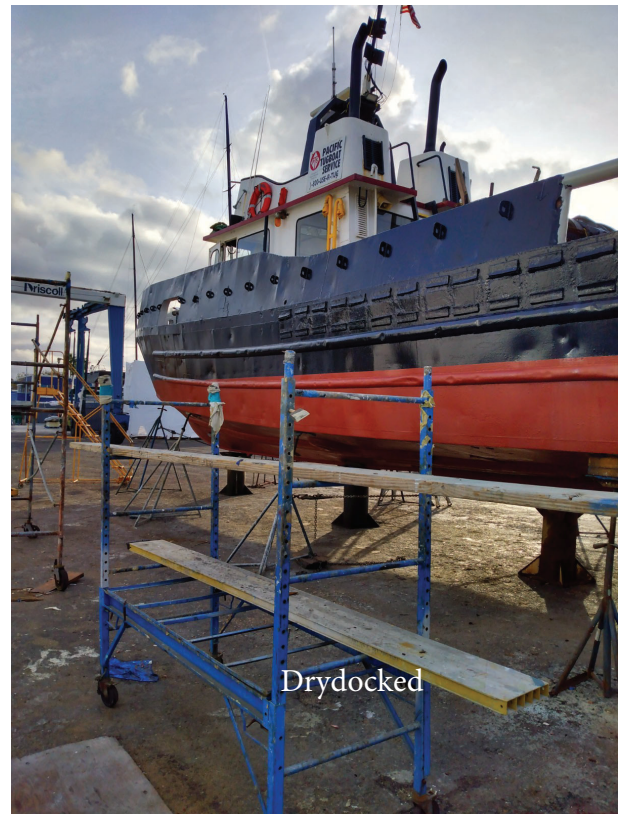


- Low hours Twin John Deere 6125 engines – Tier II – 400 hp ea
- (2)-30KW Gen sets
- 20,000 LB Winch w/ A frame
- Fresh Drydocking and COI as of Jan 2022
- Aft steel deck replaced with new
- Double drum winch refurbished
- 18 passenger COI
- Multiple uses - Freight, passengers, anchor handling, and tug
- 5% Commission included
- Ready to Work - Reduced from \$435,000 to \$365,000
- We can economically deliver on her bottom, on the barge, or on a freighter most places in the world.

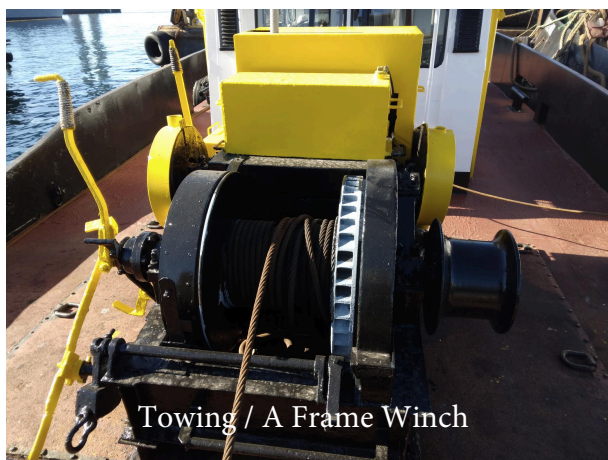
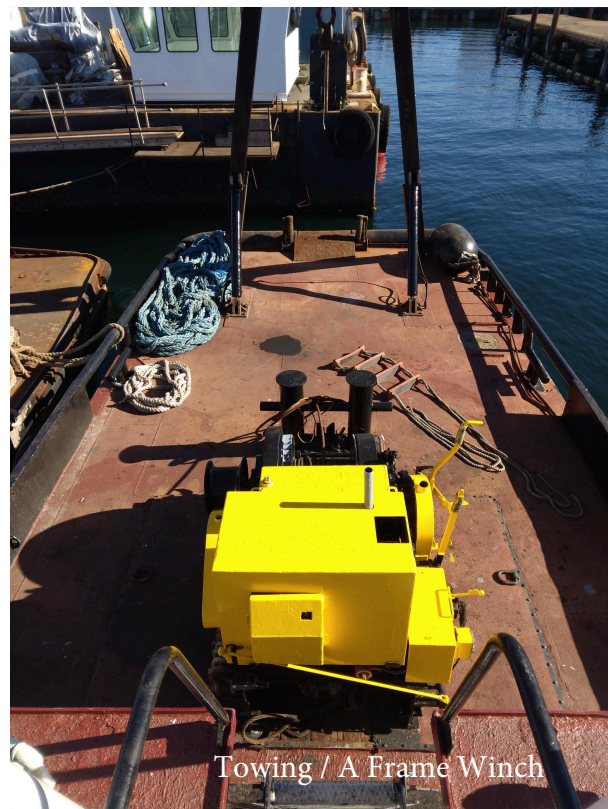
[grant@pacifictugboats.com](mailto:grant@pacifictugboats.com)

619-840-2487













Wheelhouse



Wheelhouse



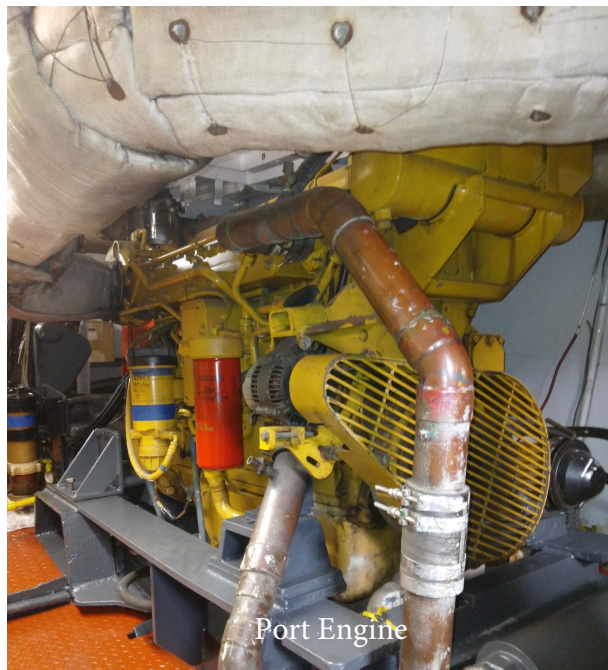
Wheelhouse











Port Engine



STBD Engine



Engine Room



Engine Room





Port Genset



STBD Genset



Distribution Panel



Steering Gear



Winch Hydraulic Pump